



## This week...

Monica is visiting Tina in Tokyo. The weather is not very good so they decide to stay home and watch TV.

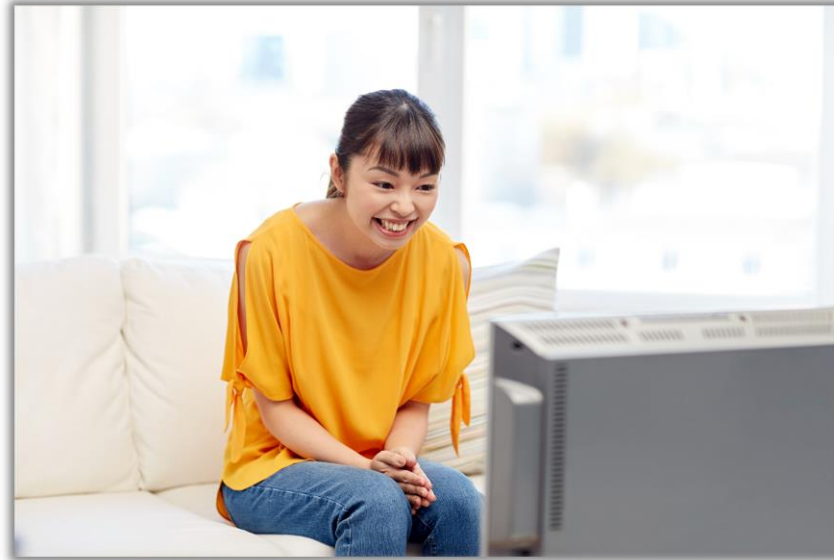
## Lesson Targets

- Deciding what to watch on TV
- Talking about your favorite TV programs

## Daily English Conversation

**Basic Class**

## Warm Up – Topic Question



What is your favorite TV program?

# Picture Description

Why are they cheering?



A



\*Create a short story using the following format

1. Who
2. Where
3. When
4. What's happening?

B



Why is that woman angry?

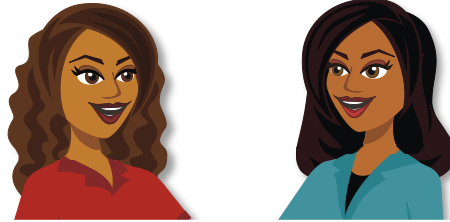
What kind of **program**  
do you want to  
**watch**?

\*Create a simple sentence  
using these words.

1. weather
2. watch
3. program
4. funny



1. **We could go to** the shop to buy some snacks.
2. **Let's stay here and** watch a movie.
3. **Why don't we watch** a documentary?
4. **I really like those kinds of** TV programs.



- Words
- Phrases

**Monica** What do you want to do today?

**Tina** I'm not sure. The **weather** isn't very good.

**Monica** **We could go to** the cinema to watch a movie or we could just stay home and **watch** TV.

**Tina** **Let's stay here and** watch TV.

**Monica** OK. What do you want to watch?

**Tina** **Why don't we watch** a Japanese variety **program**?

**Monica** Sure. **I really like those kinds of** programs. They are **funny**.

**Tina** OK. Now I need to find the remote control to turn on the TV.

Let's create sentences using your own words!

1. We could go to .....
2. Let's stay here and .....
3. Why don't we watch .....?
4. I really like those kinds of .....

1. *What do you want to do today?*

- A: Let stay home and relax.
- B: I want go out and watch a movie.
- C: I want to watch TV.

2. *What kind of TV programs do you like best?*

- A: I really like Japanese variety show.
- B: I like watch dramas.
- C: I don't like watching TV.

3. *How many hours a day do you watch TV?*

- A: I only watch TV for one hour in the mornings.
- B: I watch TV one hours a day.
- C: I watched TV about two hours a day.

4. *Do you know where the remote control is?*

- A: I think it is in the TV.
- B: Sorry. I have seen it at all today.
- C: No, I don't. It might be under the sofa.



# Role Play – Television

Student A and Student B are at home and deciding what kind of TV program they would like to watch.



**A:** What do you want to do today?

**B:** I'm not sure. The weather isn't very good.

Continue the conversation using **TV Programs** and the **Key Phrases** from below.

## Key Phrases

- Let's stay home and watch TV.
- Anything is fine.
- I really like those kind of programs.
- What do you want to watch?
- Why don't we watch ....?
- Do you know where the remote control is?
- *Other*

## TV Programs

- sitcom
- documentary
- variety
- drama
- quiz show
- current affairs
- *other*



- Who is your favorite character in a TV show?
- How many hours a day do you watch TV?
- What is your favorite kind of TV program?

- anything 何でも - *Is there **anything** you want to do today?*
- funny 面白い - *The character on that show is very **funny**.*
- program 番組 - *Comedies are my favorite TV **programs**.*
- remote control リモコン - *I always lose the **remote control**.*
- turn on 電源を入れる - *I will **turn on** the TV.*
- variety 色々な - *Japanese **variety** programs are very funny.*
- watch 見る - *I like to **watch** TV in the evenings.*
- weather 天気 - *The **weather** is not very good today.*