

## This week...

James and Wakana are deciding what kind of pet they would like to get. They are also reminiscing about the pets they used to have as a child.

## Lesson Targets

- Deciding on a pet
- Reminiscing about the pets you had as a child

## Daily English Conversation

## Advanced Class

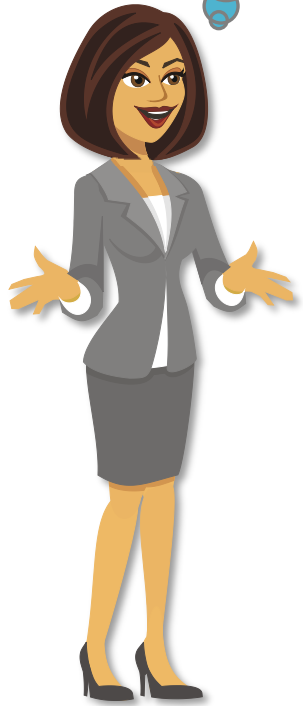
## Warm Up – Topic Question



What kind of pet did you have when you were a child?

# Picture Description

Where is that family going?



A



B

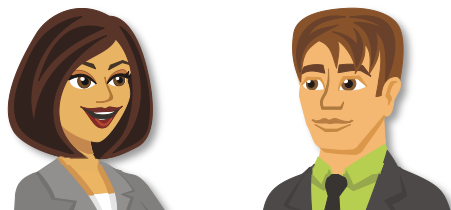


What are they reading?

C



What happened to that cat?



Wakana	James, <b>I think it is time we</b> got a pet. I want to get a dog.
James	I'm more of a cat person. We always had cats when I was growing up.
Wakana	<b>We had a</b> really cute terrier <b>when I was a child</b> . It was a very friendly dog.
James	<b>I've never had a</b> dog <b>before</b> . Are they easy to take care of?
Wakana	They are not as easy to take care of as cats.
James	Cats are quieter and don't seem to need as much attention as dogs.
Wakana	That's true, but <b>I really want to get a</b> dog. We can get a cat next year.
James	OK. Let's get a dog, but who is going to feed it and take it for walks every day?
Wakana	Of course that will be your responsibility.



I really want to get an alpaca as a pet.

1. I think it is time we .....
2. We had a ..... when I was a child.
3. I've never had a ..... before.
4. I really want to get a .....





# Role Play – Pets

Student A and Student B are talking about what kind of pet they would like to get. They are also reminiscing about the pets they had when they were kids.



A: I think it's time we got a pet.

B: What kind of pet do you want to get?

A: I want to get a **Pets** .

## Key Phrases

- I'm a cat/dog person.
- We always had .... when I was growing up.
- Are they easy to take care of?
- I really want to get ....
- We had a .... when I was a child.
- Who is going to take care of it every day?
- *Other*



## Pets

- rabbit
- hamster
- dog
- cat
- snake
- bird
- turtle
- fish
- *other*

## True or False

\* Choose a topic below and tell a short story that is either true or not true. The other students in the class and the teacher ask one question each about the story. Then they guess whether your story is true or false.



1. I think cats are very friendly animals.
2. Meeting a dog for the first time makes me nervous.
3. I know someone who has an unusual pet.
4. Taking care of pets makes me tired.

1. Which country has the most pet dogs?

- A:** Japan
- B:** USA
- C:** England
- D:** Russia

2. What was the first cloned animal in the 1990s?

- A:** Dolly the sheep
- B:** Timmy the horse
- C:** Sally the cow
- D:** Richie the rat

3. Dogs are commonly referred to as...?

- A:** four-legged friends
- B:** furry friends
- C:** canine companions
- D:** man's best friend

4. Which of these is a type of hairless cat?

- A:** Sphynx
- B:** Tabby
- C:** Persian
- D:** Russian Blue





- What animal makes the best pet in your opinion?
- Are you afraid of any animals?
- If you could be an animal, what would you choose to be? Why?

- afraid - I am *afraid* of big dogs.
- attention - Little dogs need lots of *attention*.
- feed - Can you please *feed* the cat?
- friendly - My mother's cat is so *friendly*.
- nervous - My sister's dog always makes me *nervous*.
- responsibility - It's your *responsibility* to take the dog for a walk.
- unusual - I like taking care of *unusual* pets.